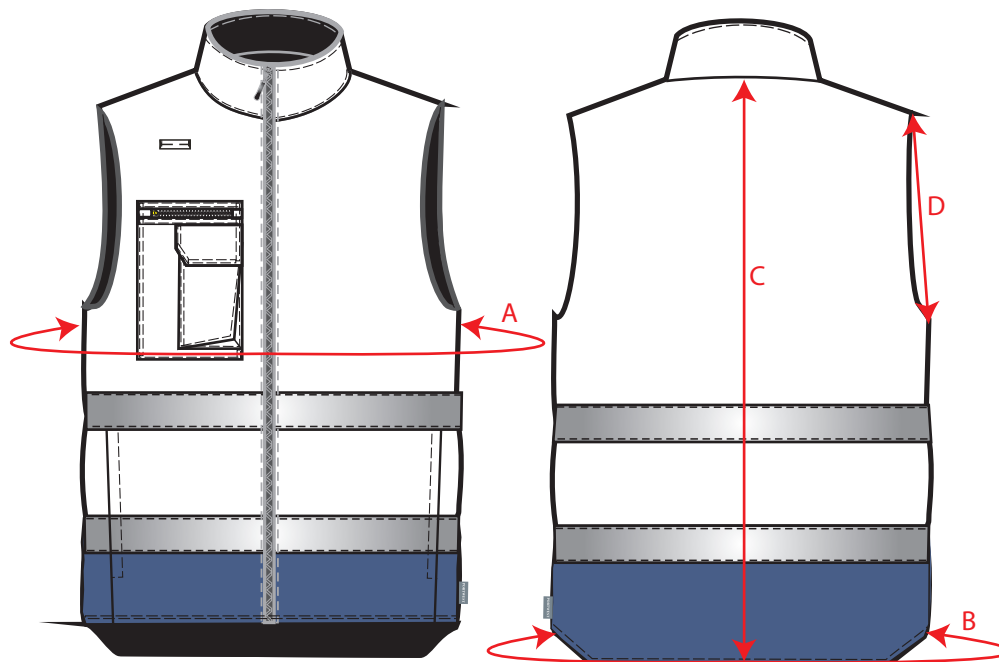


STYLE NO: S267

DESCRIPTION: Hi Vis Two Tone Bodywarmer



Areas		S	M	L	XL	2XL	3XL	4XL	5XL	Tolerance
		92-100	100-108	108-116	116-124	124-132	132-140	140-148	148-156	Plus
Chest Circumference	A	114	122	130	138	146	154	162	170	1
Hem Circumference	B	110	118	126	134	142	150	158	166	1
Nape to Hem	C	80	80	80	80	82	82	82	82	1
Armhole Diagonal (point to point)	D	25	26	27	28	29	30	31	32	0.5